

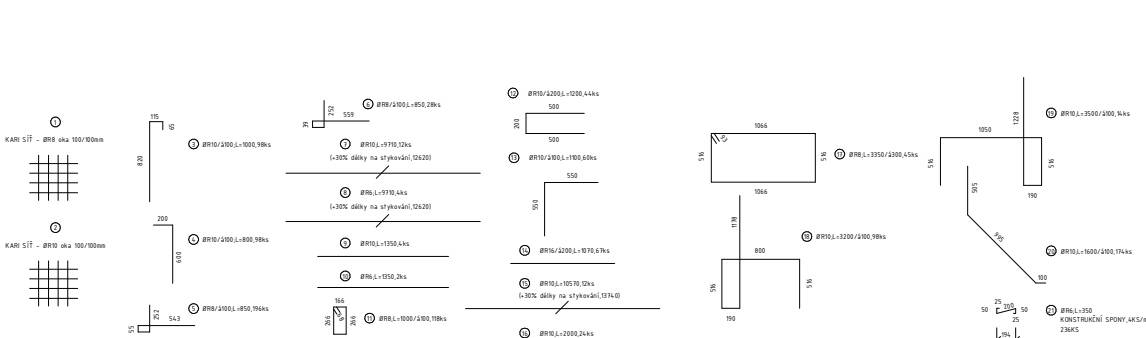
Technical drawing of a rectangular building layout. The drawing shows a long rectangular structure with a smaller rectangular section on the right side. Dimensions are provided in meters (m). The overall length is 1000 m, and the overall width is 1000 m. The drawing includes several numbered points (1, 2, 3, 4) and lines indicating specific features or boundaries. The drawing is oriented with the long side horizontal and the short side vertical.

Dimensions (m):

- Overall length: 1000
- Overall width: 1000
- Internal length segments: 800, 200, 200
- Internal width segments: 800, 200

Numbered points and lines:

- Point 1: Located at the top right corner of the main rectangle.
- Point 2: Located at the bottom right corner of the main rectangle.
- Point 3: Located at the bottom right corner of the smaller rectangular section.
- Point 4: Located at the bottom left corner of the main rectangle.



The drawing shows a detailed elevation of a building facade. It features a large rectangular area filled with a dense grid of small squares, representing a window or screen system. The grid is flanked by vertical structural elements. Dimensions are provided at the top and bottom. At the top left, there are two horizontal dimension lines: one labeled '10,75' and another labeled '10,65'. At the bottom, there are two horizontal dimension lines: one labeled '9780' and another labeled '9880'. A red arrow points to a specific location on the right side of the grid, accompanied by the text 'PROSTUP PRO DESTVOY SVOD DNIN'.

[illegible]

Technical drawing of a rectangular frame structure. The drawing shows a cross-section of a frame with a total width of 800 and a total height of 1000. The frame is composed of several members, labeled with circled numbers 1 through 8. The top horizontal member is labeled 1, the right vertical member is labeled 2, the bottom horizontal member is labeled 3, and the left vertical member is labeled 4. The internal diagonal members are labeled 5, 6, 7, and 8. The drawing includes dimension lines indicating the overall width (800) and height (1000). The frame is shown in a perspective view, with the top and bottom edges slightly angled to show depth.

[illegible]

Označení [z]		Tabulka provedené výzkušy			
Označení [z]	Délka [m]	$\sigma_B$	$\sigma_R$	$\sigma_{10}$	$\sigma_{16}$
3	10	1			98
4	10	0,8			78,4
5	8	0,85	196	166,6	
6	8	0,85	28	23,8	
7	10	12,63			151,44
8	6	12,62	4	50,48	
9	10	1,35			5,4
10	6	1,35	2	2,7	
11	8	1	118	118	
12	10	1,2	44		52,8
13	10	1,1	60	66	
14	10	1,07	67		71,6
15	10	18,87	12		226,44
16	10	2	24		48
17	10	3,31	45	150,75	
18	10	3,2			333,6
19	10	3,5	14		49
20	10	1,6	98		156,8
21	6	0,35	132	46,2	
Délka [m]		99,38	525,15	1179,88	73,6
Hmotnost [kg]		0,222	0,878	1,617	1,5
Hmotnost celková [kg]		22,262	207,434	727,886	733,2
Hmotnost celková [kg]			1070,75		

Tabulka sířezové výztuhy						
Označení	Ø [mm]	Sílka [m]	Délka [m]	Přesah [m]	Plocha [m <sup>2</sup> ]	Hmotnost kg/m <sup>2</sup>
1	8/100/100	Viz výkres		30	40,603	7,5
2	10/100/100			30	100,880	12,3
Celková plocha [m <sup>2</sup> ]					141,483	
Celková hmotnost KARI Ø8 [kg]					320,763	
Celková hmotnost KARI Ø10 [kg]					1245,868	
Hmotnost celkem [kg]					1566,631	

VÝZTUŽ B 500B, KARI  
BETON C30/37, XC4, XD3, XF4  
KRYTÍ HORNÍ OKRAJ 55mm  
KRYTÍ DOLNÍ OKRAJ 40mm  
KRYTÍ STĚNA, 35mm

Technical drawing of a window frame assembly. The drawing shows a cross-section of the frame and the glass unit. The frame is composed of a main body and a sash. The glass unit is shown in the center, with a red line indicating the seal or gasket. The drawing is a line drawing with red highlights.

[illegible]